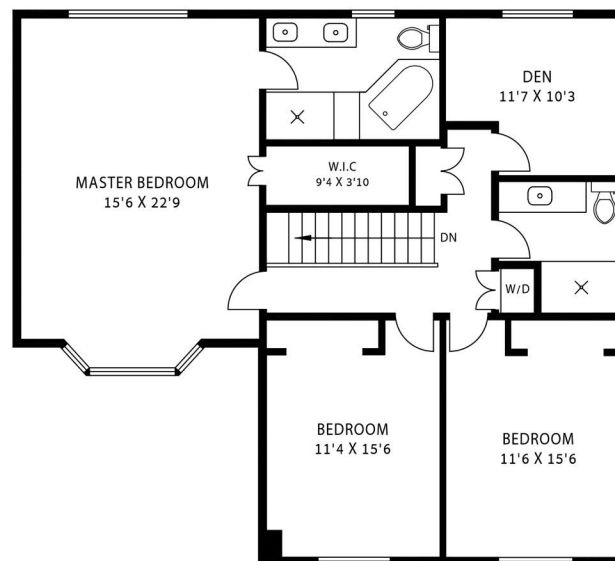
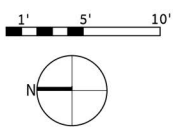
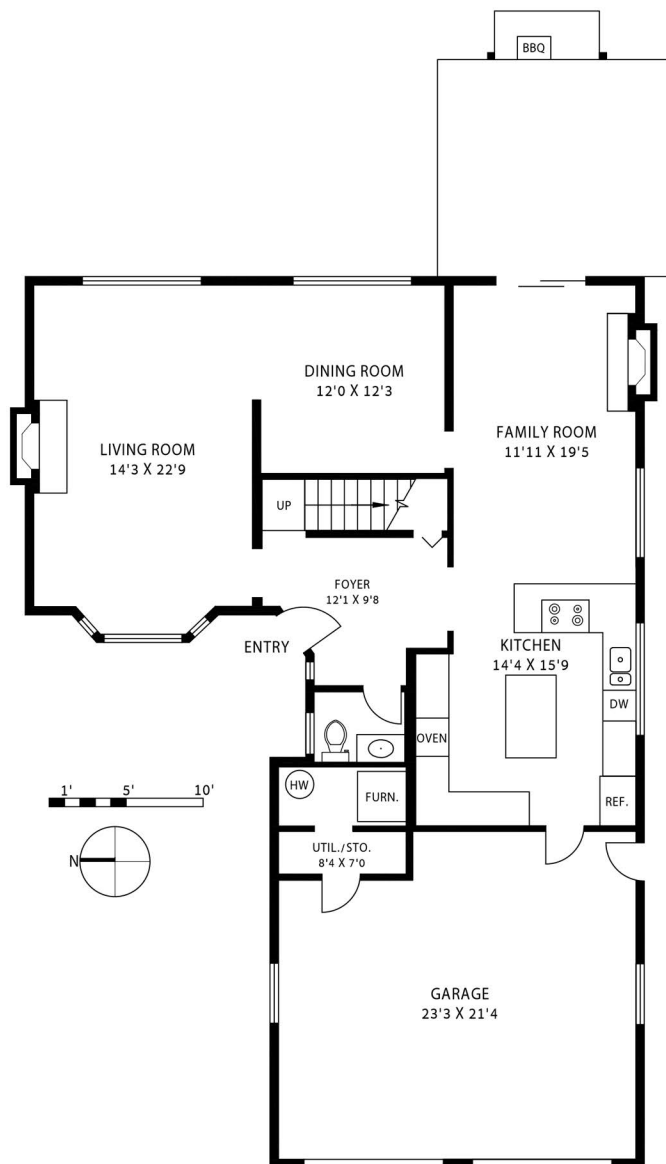


ROLAND LEWIS

PERSONAL REAL ESTATE CORPORATION



3545 Robison Rd, North Vancouver

MAIN FLOOR	1184 sqft
UPPER FLOOR	1238 sqft
TOTAL LIVABLE AREA	2422 sqft
GARAGE	503 sqft
STORAGE/UTILITY	67 sqft

THIS FLOORPLAN IS FOR ILLUSTRATION PURPOSES ONLY AND ALL DIMENSIONS SHOULD BE CONSIDERED APPROXIMATE